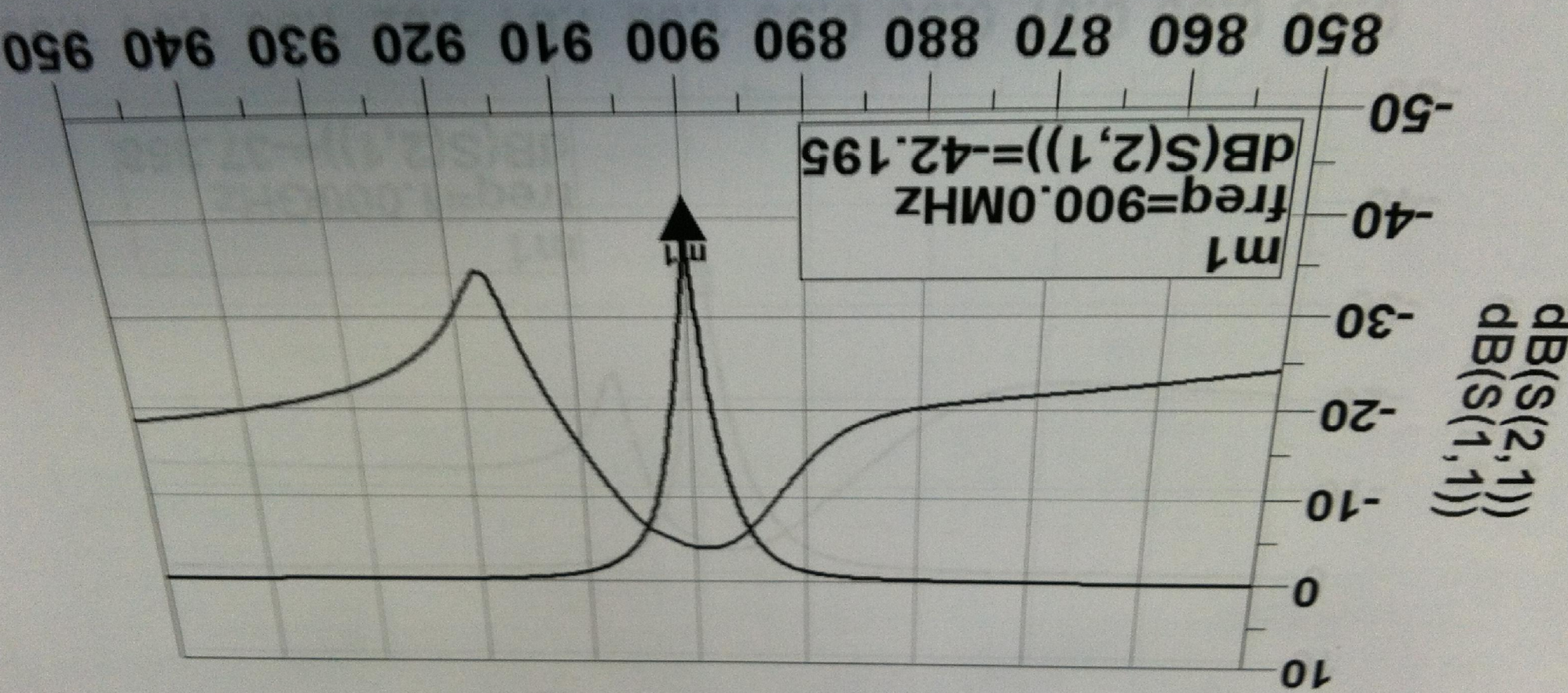


Tunable Notch Filter (TRILITHIC 3VNF 0.5GHz-1.0GHz)  
 Setting Frequency: 0.9GHz



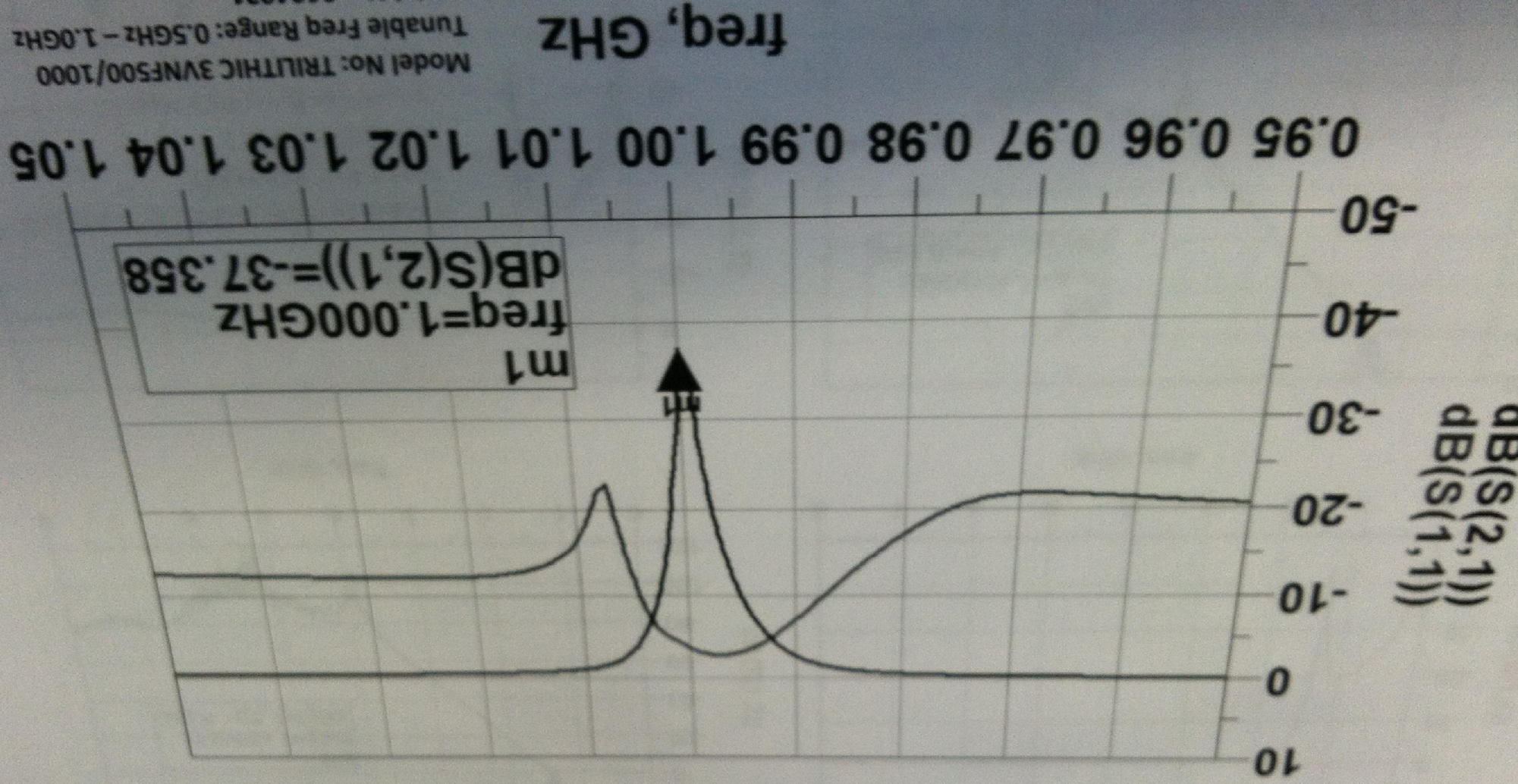
Model No: TRILITHIC 3VNF500/1000  
 Tunable Freq Range: 0.5GHz - 1.0GHz  
 Serial No: 9604021  
 Available Unit: 1  
 Done by: Sung Kyu Han

freq, MHz



# Tunable Notch Filter (TRILITHIC 3VNF 0.5GHz-1.0GHz)

Setting Frequency: 1.0GHz

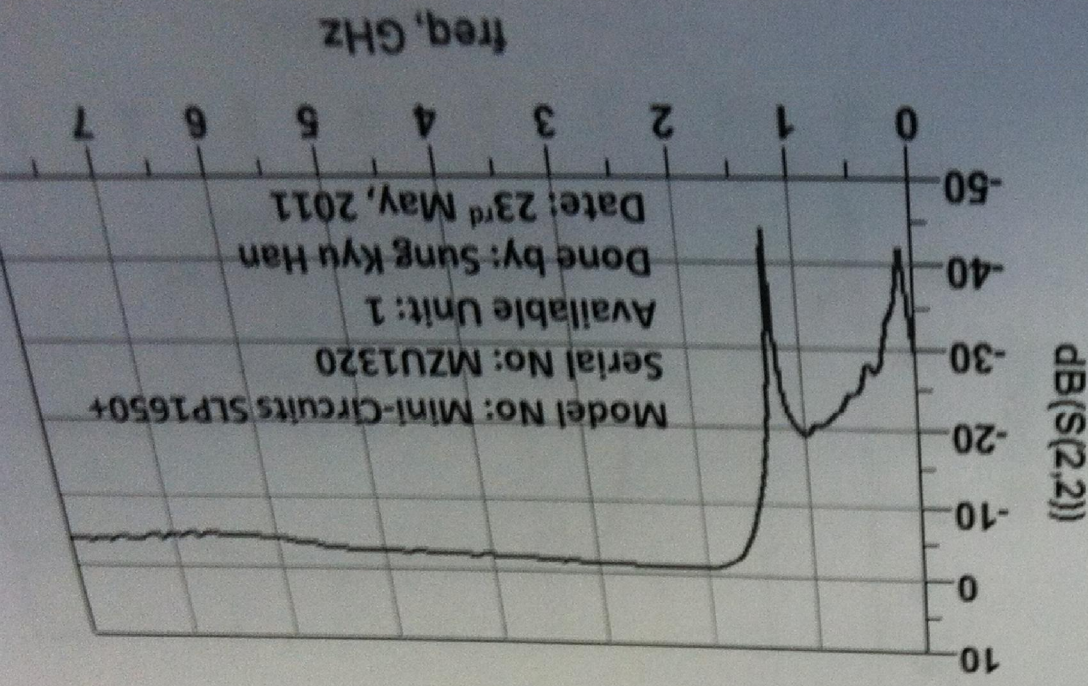
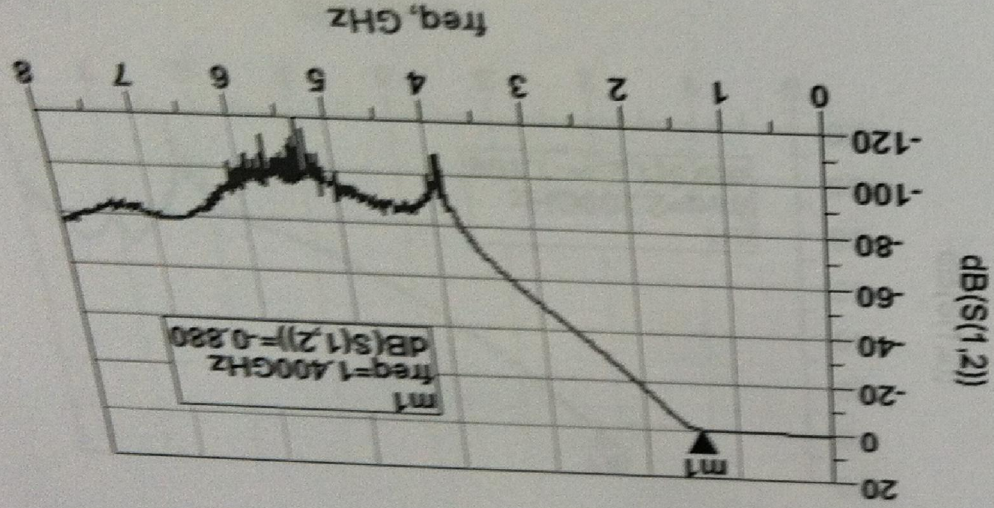
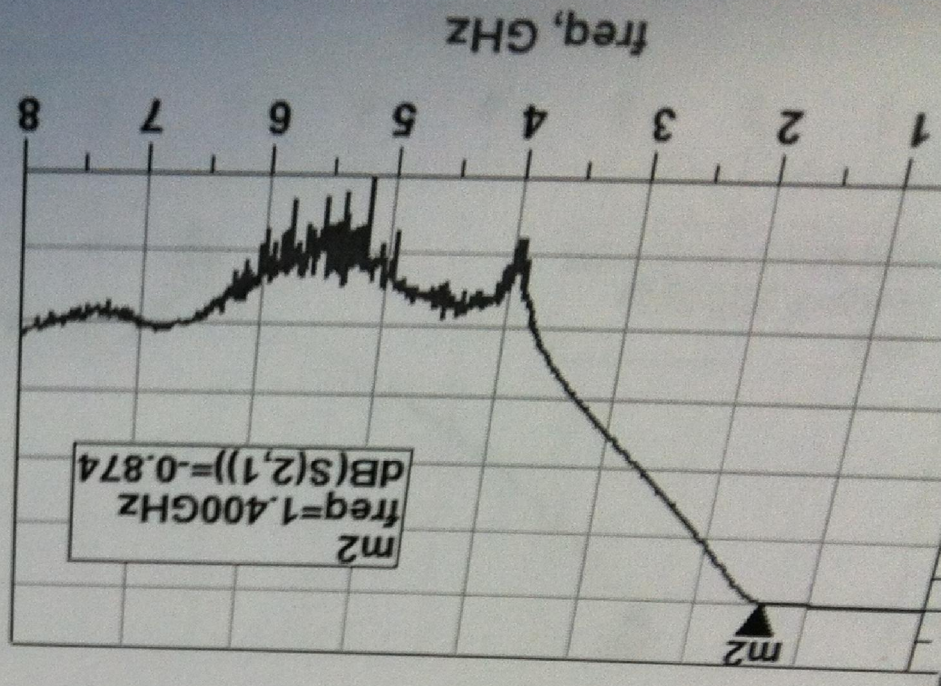
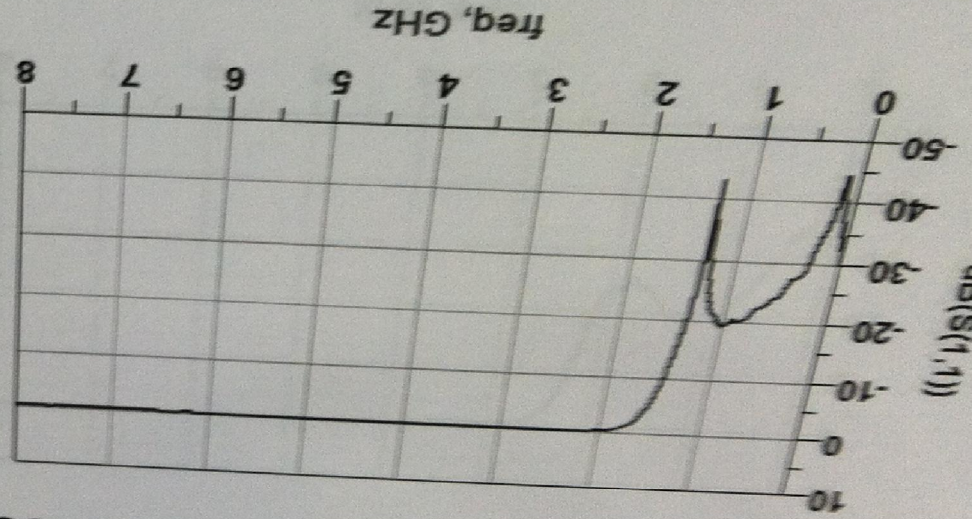


Model No: TRILITHIC 3VNF500/1000  
Tunable Freq Range: 0.5GHz - 1.0GHz  
Serial No: 9604021  
Available Unit: 1



# Low Pass Filter (Mini-Circuits SLP1650+)

Passband: DC-1.4GHz



Model No: Mini-Circuits SLP1650+  
Serial No: MZU1320  
Available Unit: 1  
Done by: Sung Kyu Han  
Date: 23<sup>rd</sup> May, 2011



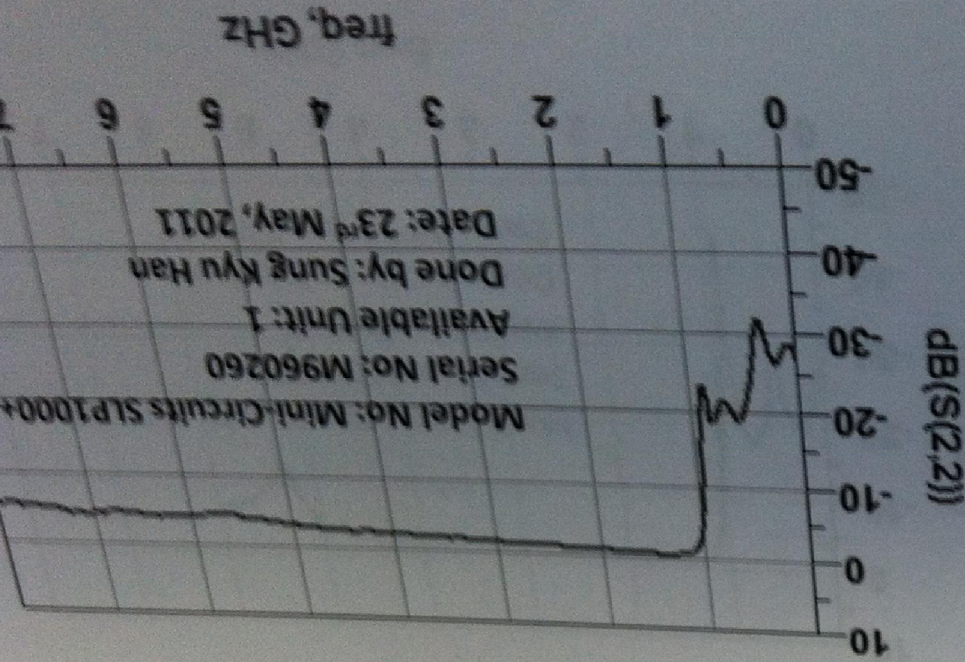
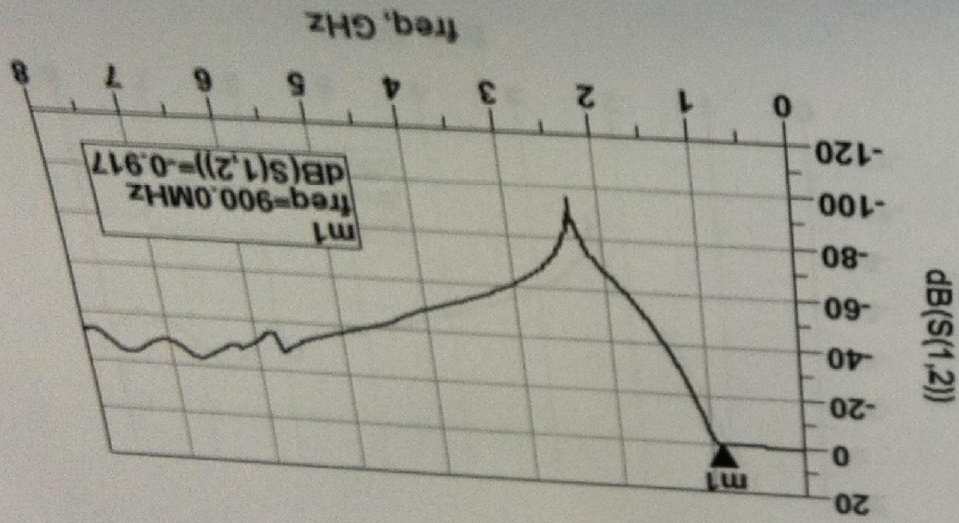
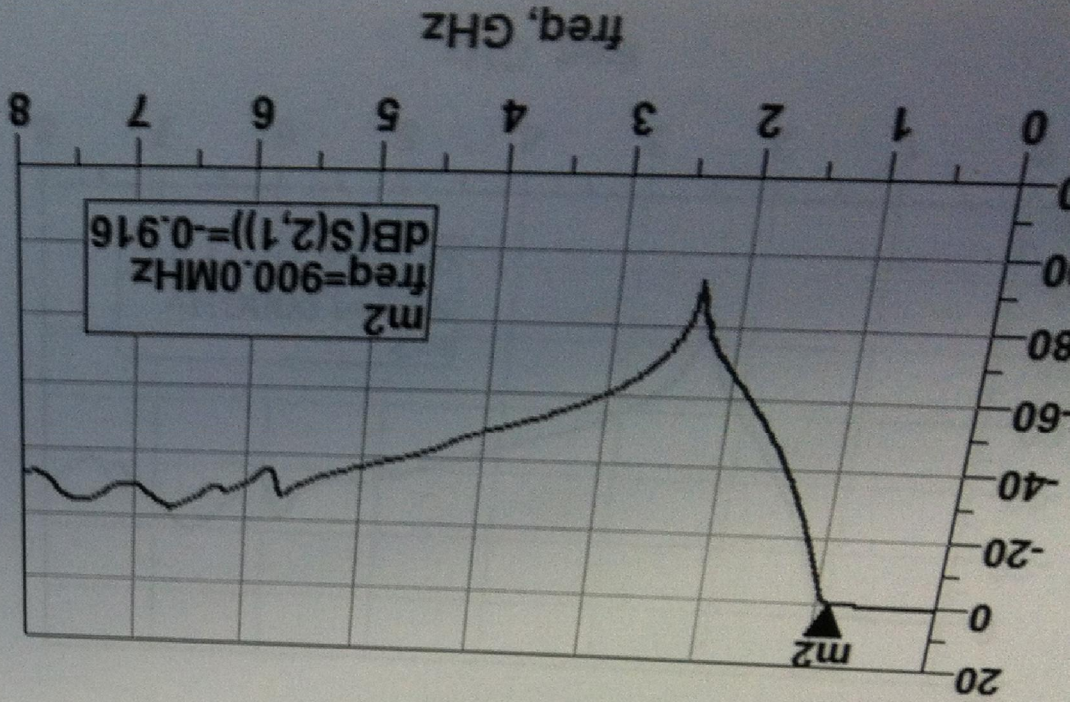
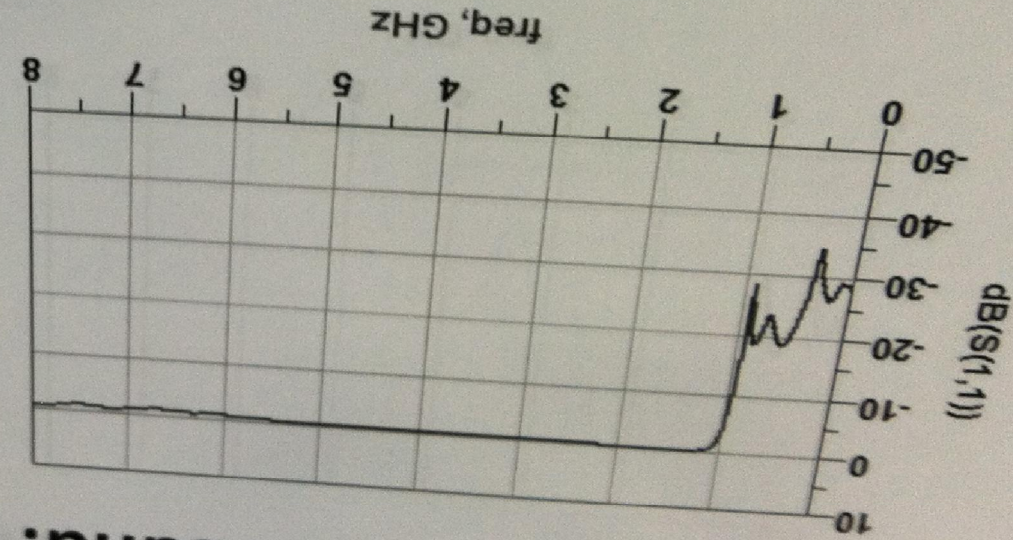
# Filters

Received	Category	Min Freq	Max Freq	Equipment Manufacturer	Part Number	Connector	Quantity
May/2011	Lowpass	DC	2200MHz	Mini circuits	SLP-2400+	SMA	1
May/2011		DC	2700MHz	Mini circuits	SLP-2950+	SMA	1
May/2011		DC	1400MHz	Mini circuits	SLP-1650+	SMA	1
May/2011		DC	1000MHz	Mini circuits	SLP-1200+	SMA	1
May/2011		DC	2100MHz	K&L	8L120-2100-0	SMA	1
May/2011		DC	900MHz	Mini circuits	SLP-1000+	SMA	1
Jun/2011		DC	1.9MHz	Mini circuits	LSP-1.9+	SMA	2
Jun/2011		DC	530MHz	Mini circuits	VLF-530+	SMA	2
Aug/2007		9.5 MHz	11.5 MHz	Mini circuits	SBP-10.7+	SMA	1
Aug/2007		69 MHz	71 MHz	Mini circuits	ZFBP-70-S+	SMA	1
March/2010		710 MHz	850 MHz	Mini circuits	VBFBZ-780-S+	SMA	1
March/2010		875 MHz	1010 MHz	Mini circuits	ZX75BP-942-S+	SMA	1
		1730MHz	2270MHz	Mini circuits	VBFB2-2000-S+	SMA	3
May/2011		3400MHz	9900MHz	Mini circuits	VHP-3100+	SMA	1
May/2011	Bandpass	1700MHz	4500MHz	Mini circuits	VHP-1500+	SMA	1
March/2010		100 MHz	3 GHz	Mini circuits	SHP-100A+	SMA	1
Jun/2011		1340 MHz	4000 MHz	Mini circuits	VHF-1200+	SMA	2
Jun/2011		2500 MHz	5000 MHz	Mini circuits	VHF-2100+	SMA	2
Jan/2011		1.93 GHz	1.99 GHz	Lorch	5BR4-1960/150-S	SMA	1
May/2011		Table Notch Filter					
				Trilithic	3VNF500/1000-50-AA	N	1



# Low Pass Filter (Mini-Circuits SLP1000+)

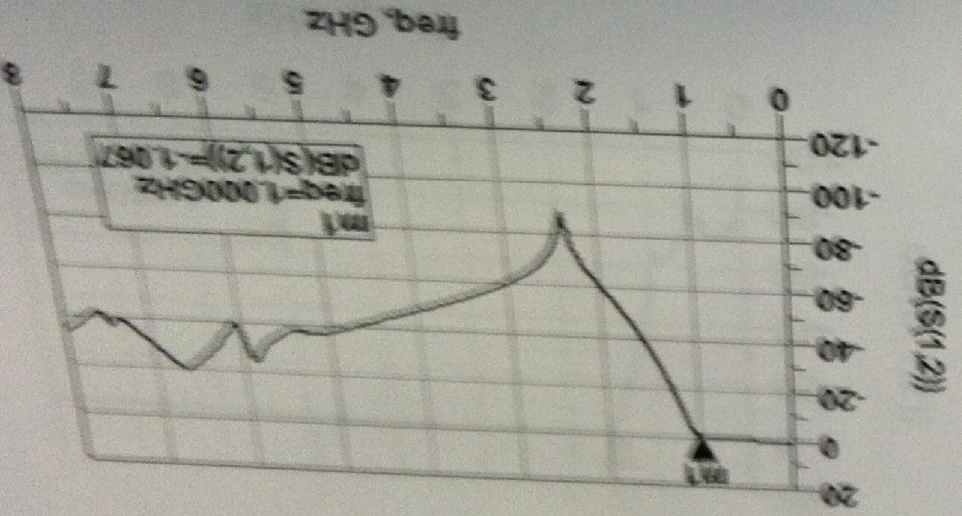
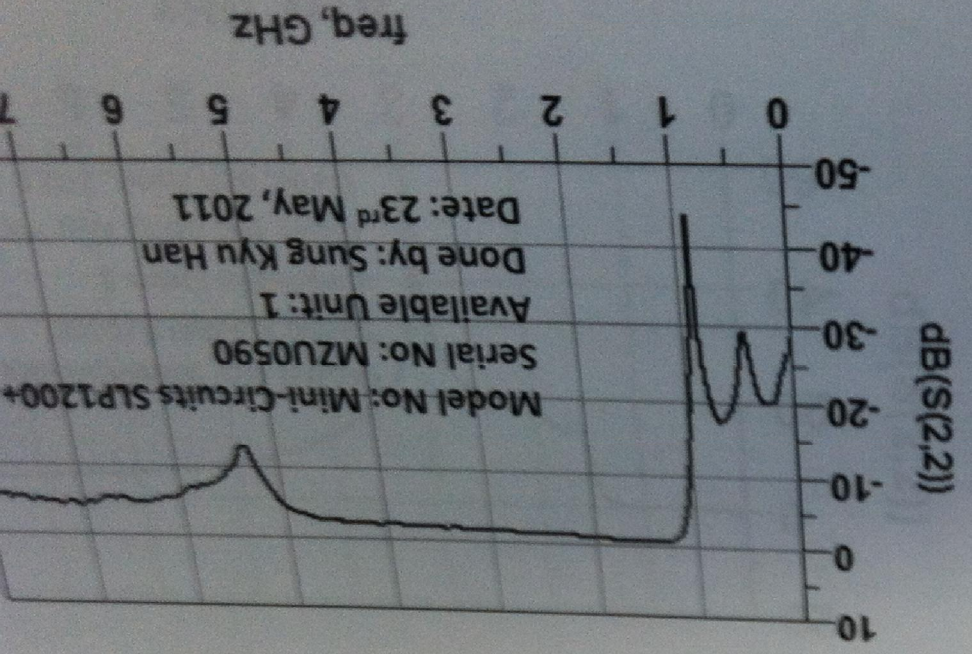
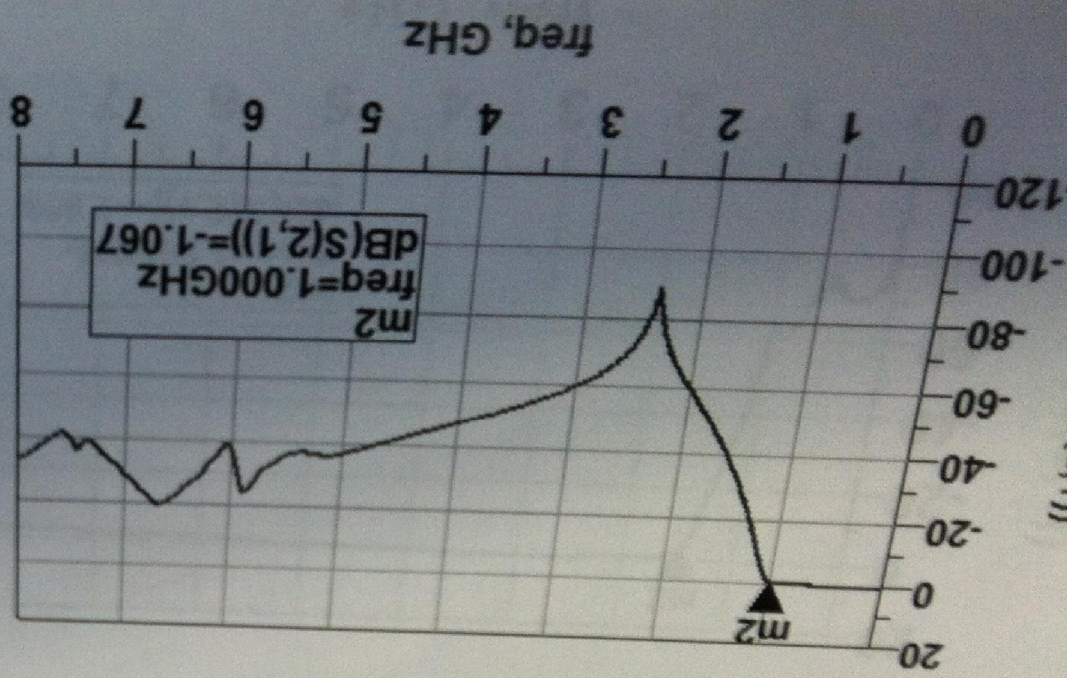
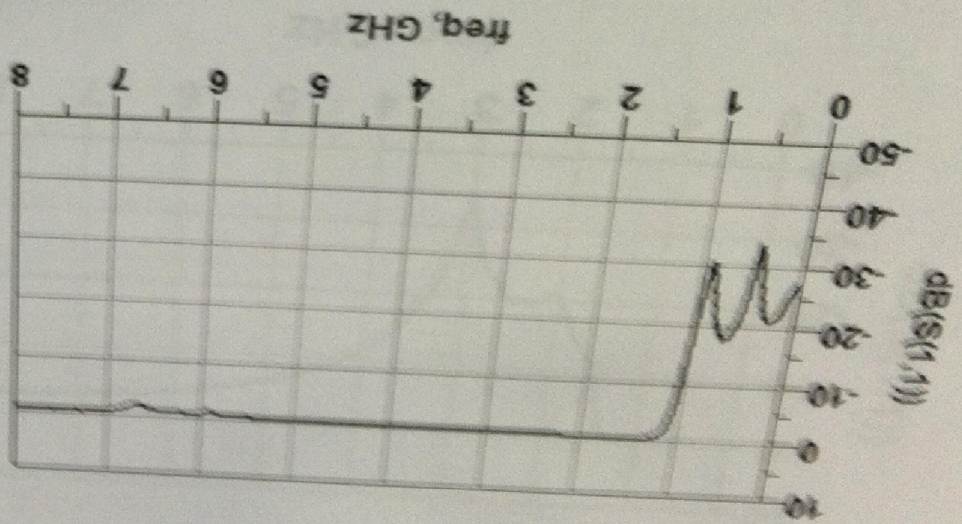
Passband: DC-900MHz





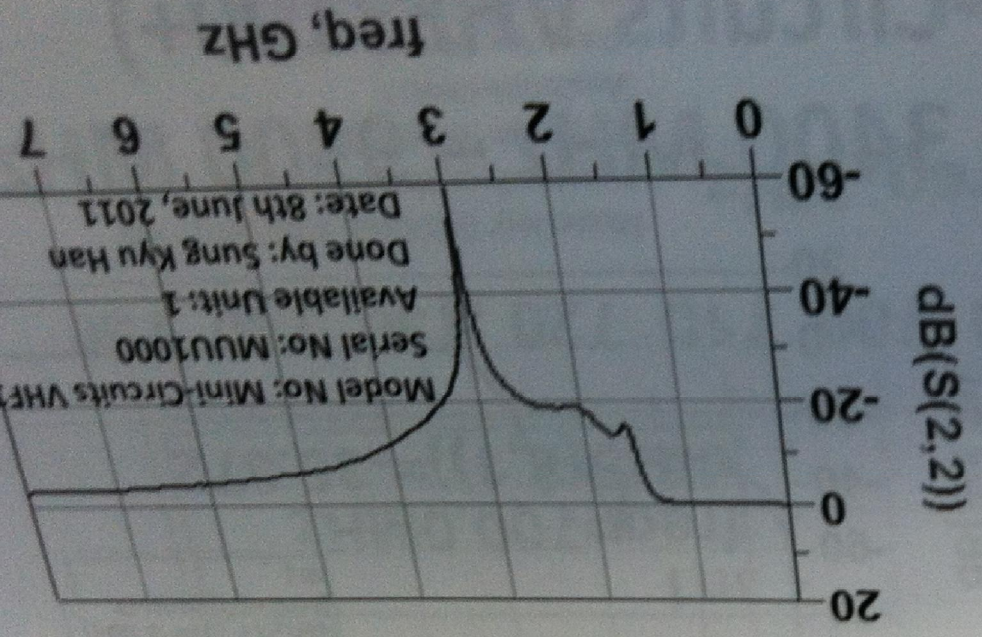
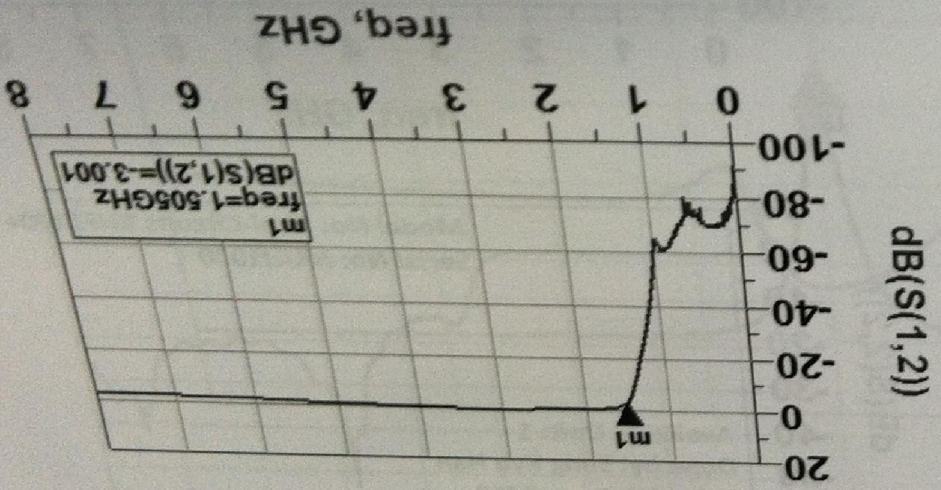
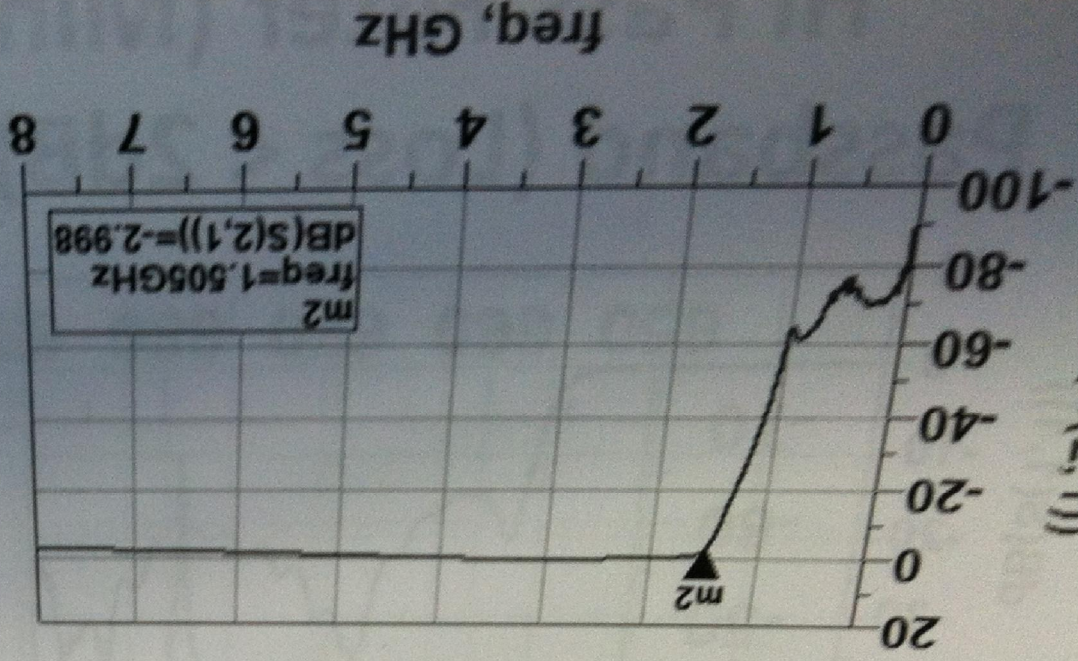
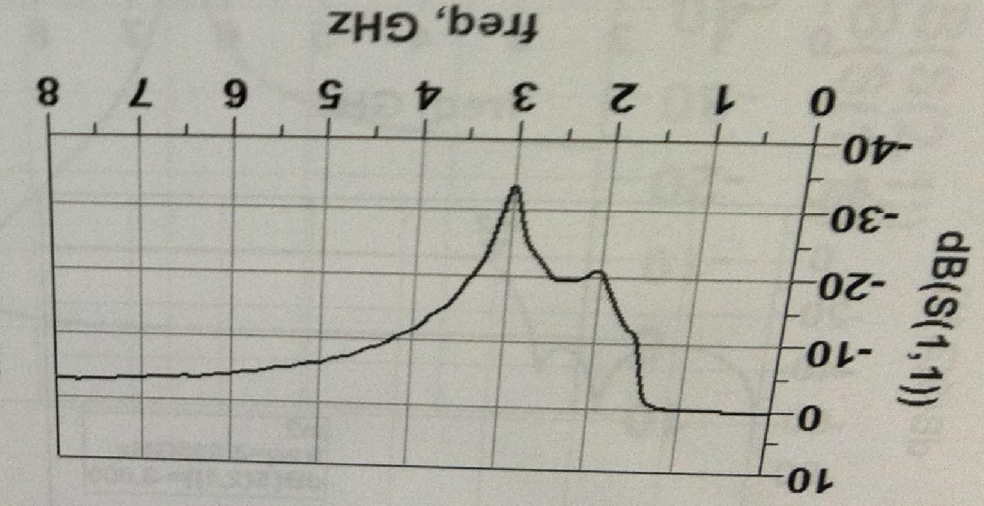
# Low Pass Filter (Mini-Circuits SLP1200+)

Passband: DC-1.0GHz





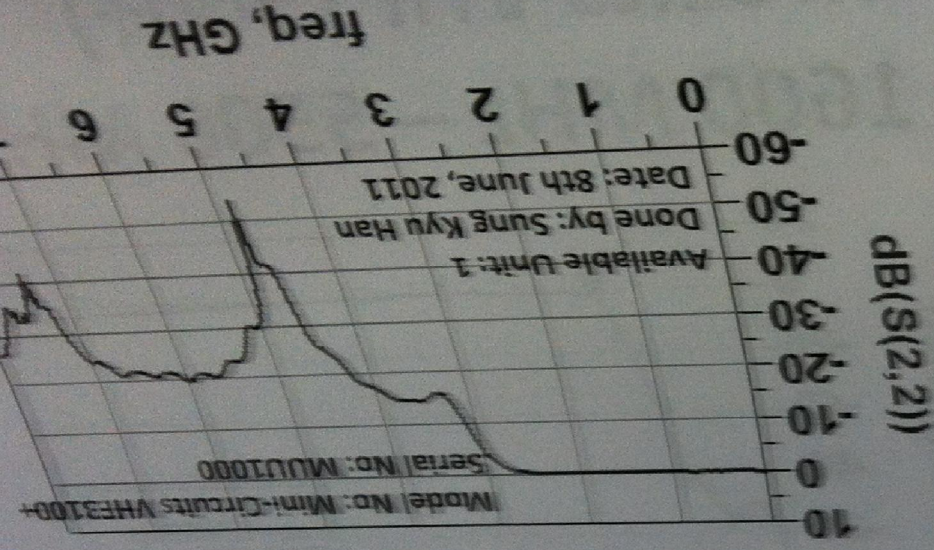
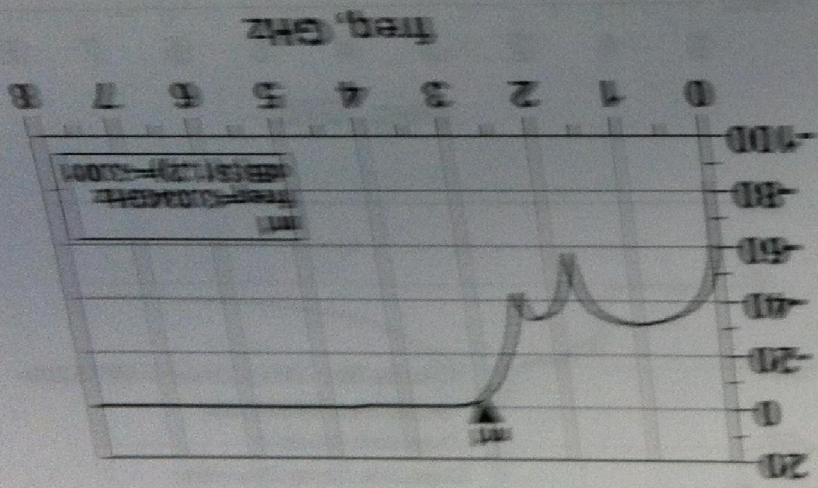
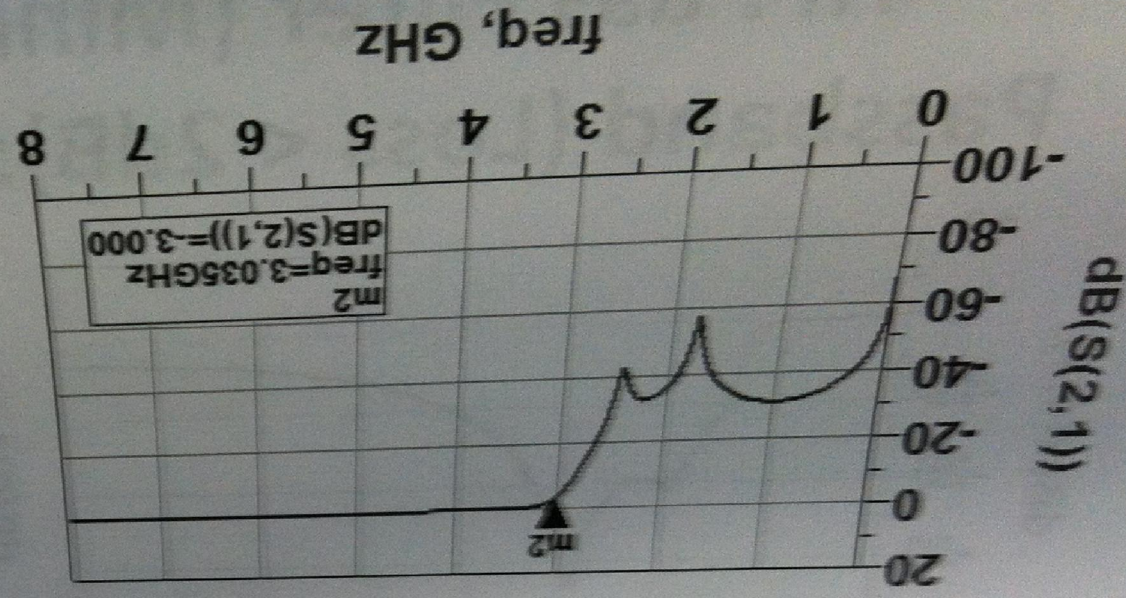
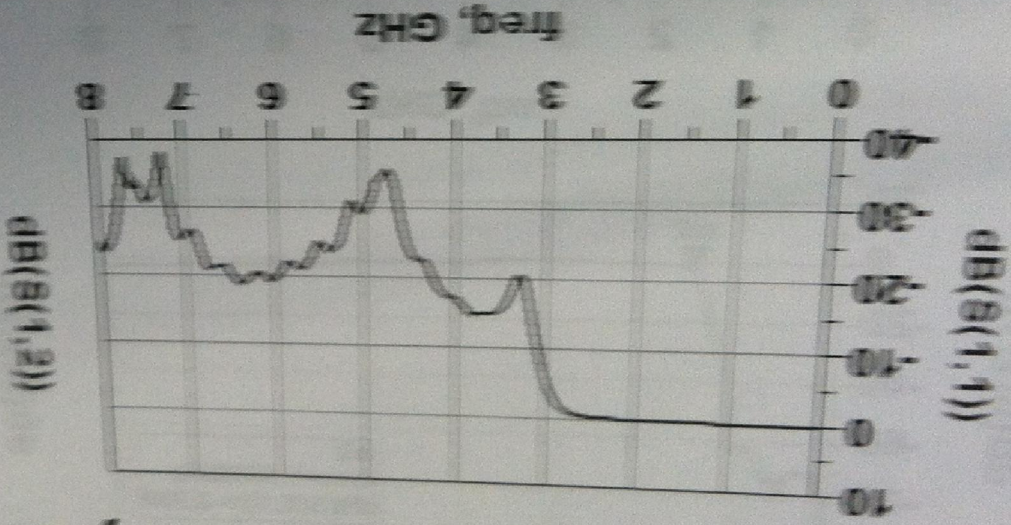
# Hi Pass Filter (Mini-Circuits VHF1500+) Passband (Loss < 2dB): 1600 MHz – 5500 MHz



Model No: Mini-Circuits VHF1500+  
 Serial No: MUU1000  
 Available Unit: 1  
 Done by: Sung Kyu Han  
 Date: 8th June, 2011



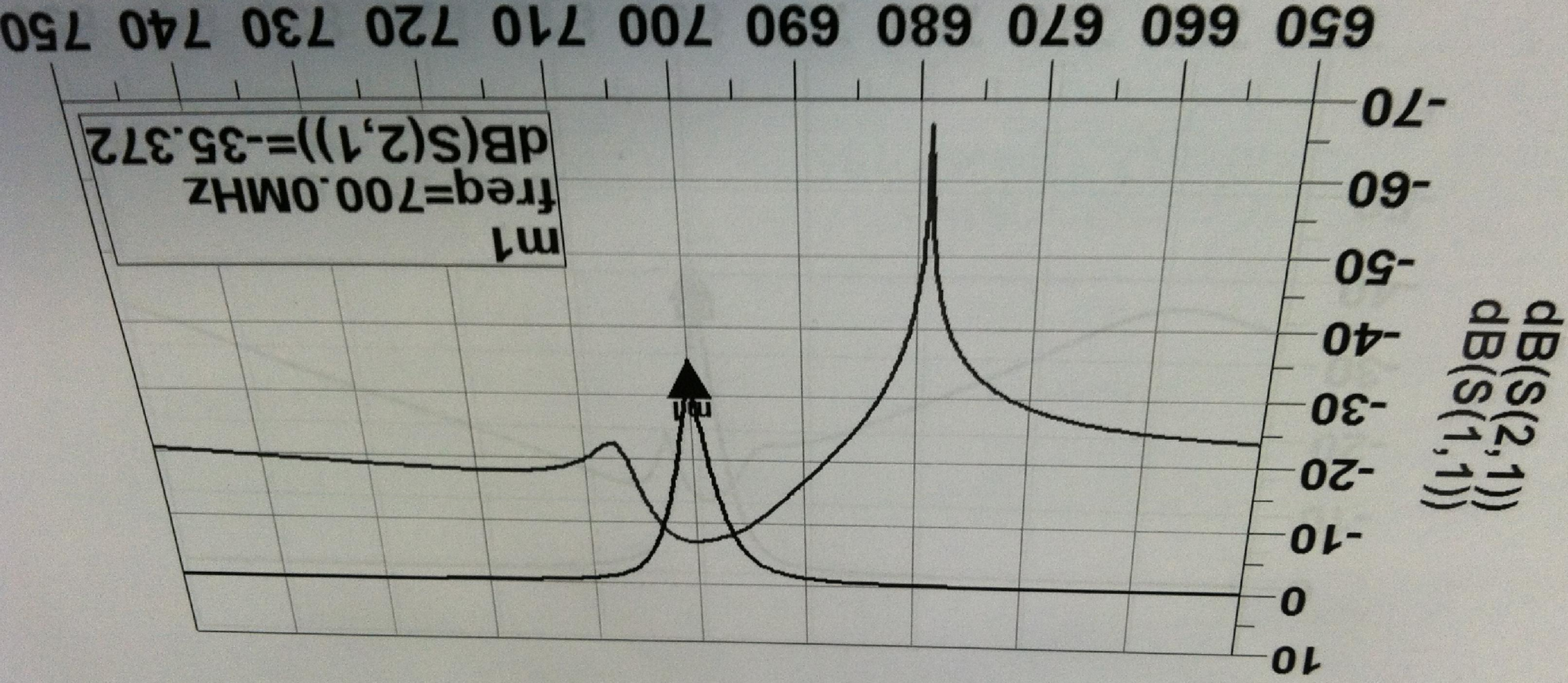
# Hi Pass Filter (Mini-Circuits VHF3100+) Passband (Loss < 2dB): 3400 MHz – 9900 MHz



Model No: Mini-Circuits VHF3100+  
Serial No: MUJ1000  
Available Unit: 1  
Done by: Sung Kyu Han  
Date: 8th June, 2011



# Tunable Notch Filter (TRILITHIC 3VNF 0.5GHz-1.0GHz) Setting Frequency: 0.7GHz



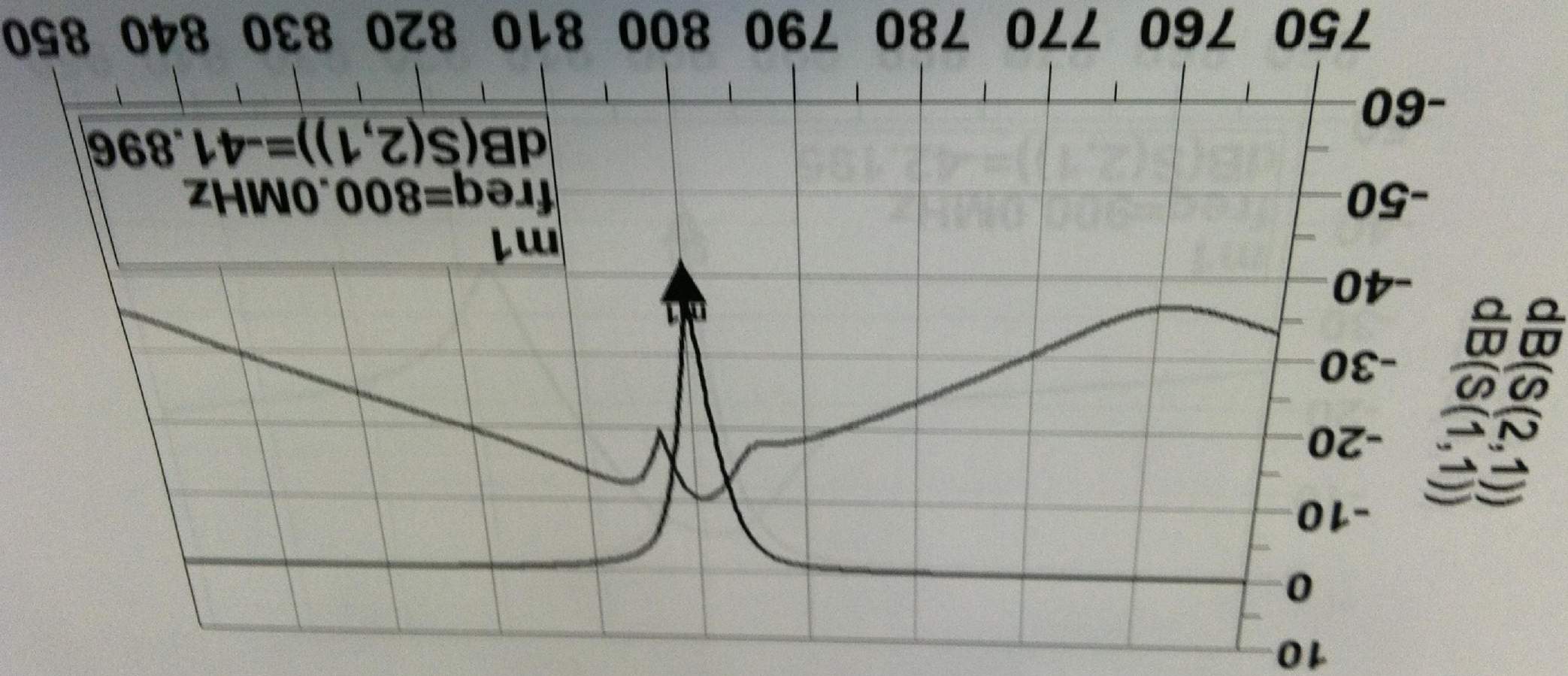
freq, MHz

Model No: TRILITHIC 3VNF500/1000  
Tunable Freq Range: 0.5GHz - 1.0GHz  
Serial No: 9604021  
Available Unit: 1



# Tunable Notch Filter (TRILITHIC 3VNF 0.5GHz-1.0GHz)

Setting Frequency: 0.8GHz



freq, MHz

Model No: TRILITHIC 3VNF500/1000  
Tunable Freq Range: 0.5GHz - 1.0GHz  
Serial No: 9604021  
Available Unit: 1  
Done by: Sung Kyu Han  
Date: 28th May, 2011