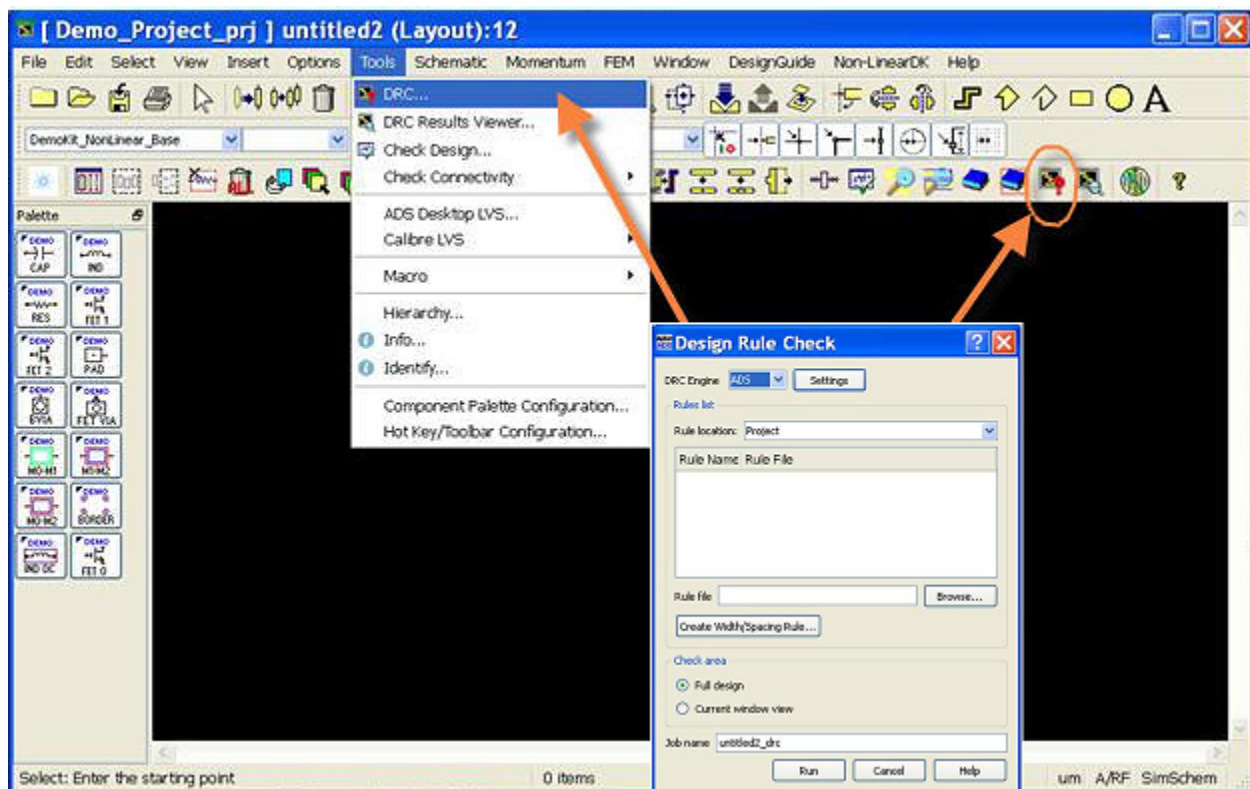


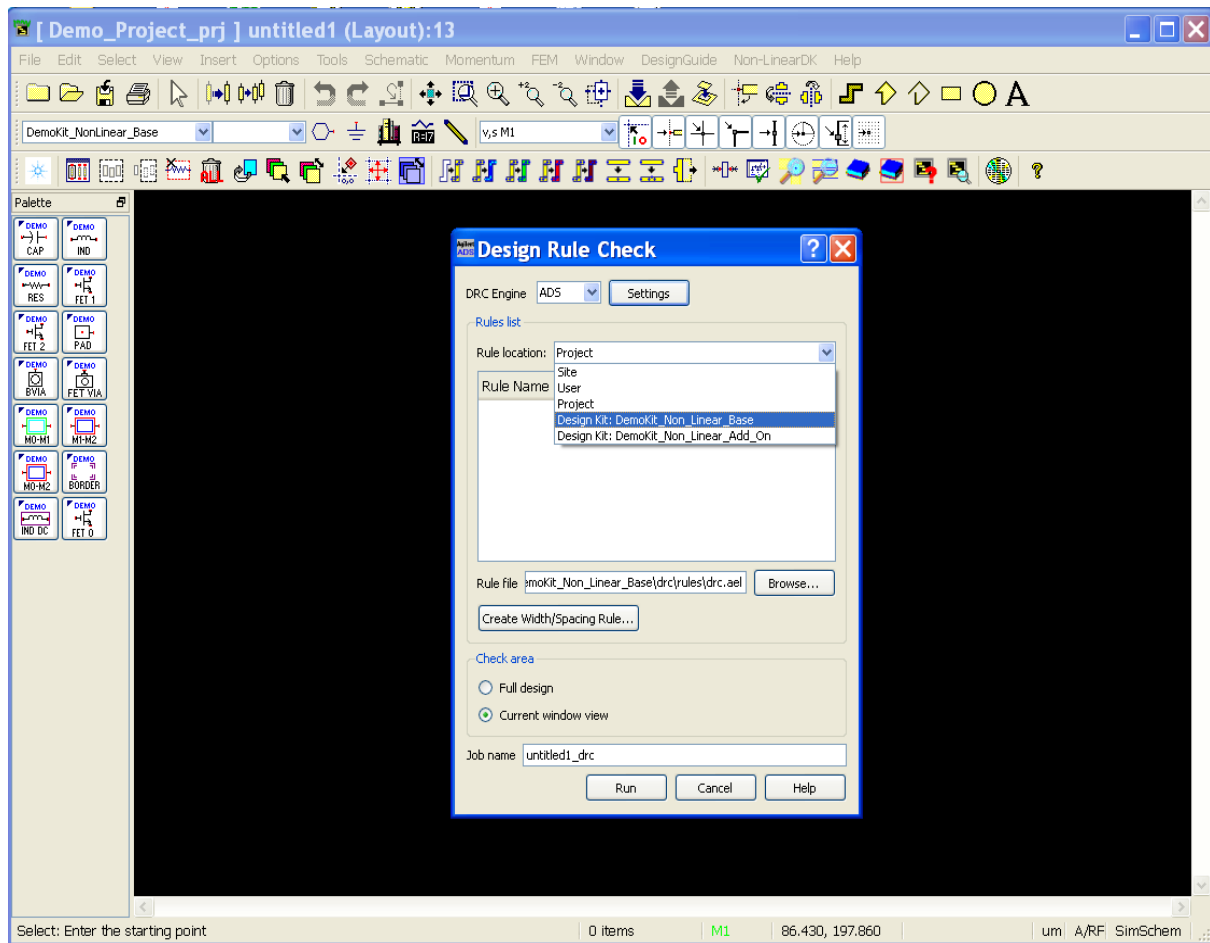
DRC QUICK START

For running a DRC on a design opened in a layout window follow the following steps:-

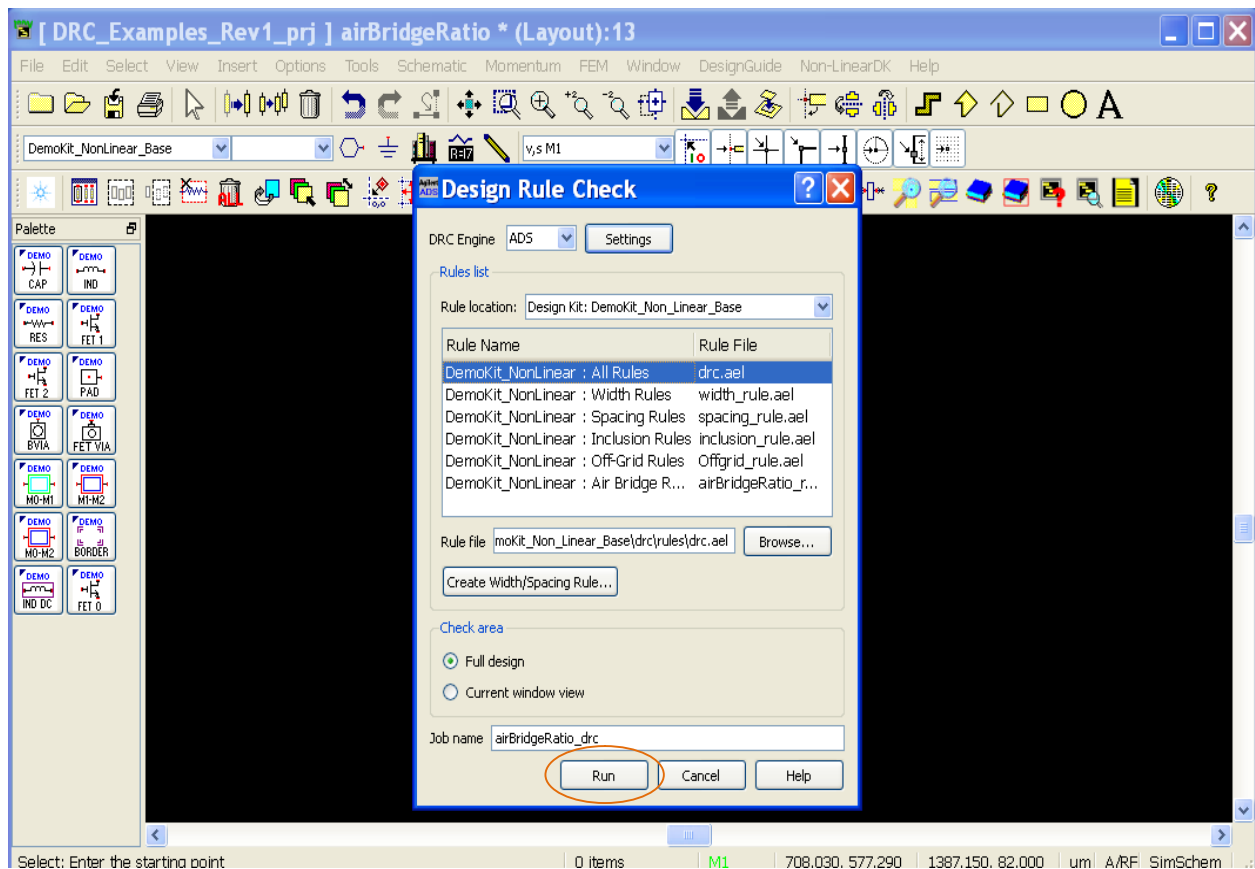
1. In the layout window click on Tools>DRC... or click on the DRC icon present in the toolbar as shown below after which a DRC window will open



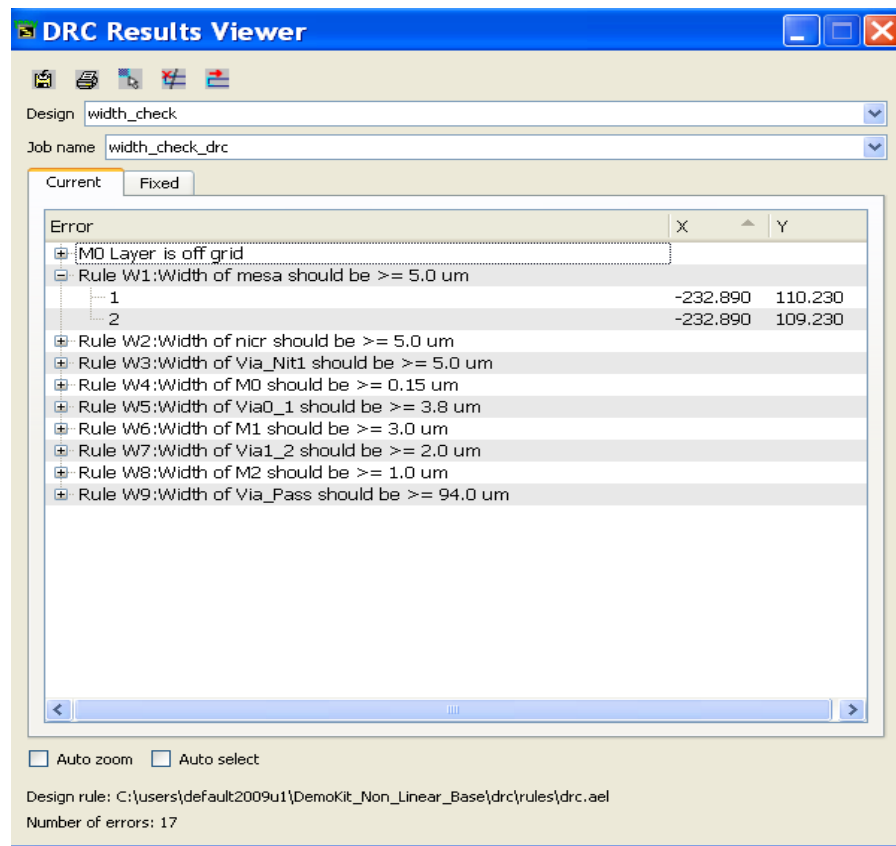
2. In the DRC dialog box, choose 'Rule location' 'Design Kit: DemoKit_Non_Linear_Base' as shown below



3. Associated Rule files should get populated for the design kit selection. Now choose the appropriate Rule File and click on Run



After DRC is run, DRC Results Viewer will open with the list of all the violations along with the Rule Numbers and error messages as shown below:-



One can also chose the auto zoom and auto select options which helps the user to automatically select and zoom on the desired error in the layout window.

Note:- Also install DRC_Example_Rev1.zap project located in DemoKit_Non_Linear_Base_v2.0>examples to check various Rule Violations after a DRC run.