



Style Transfer

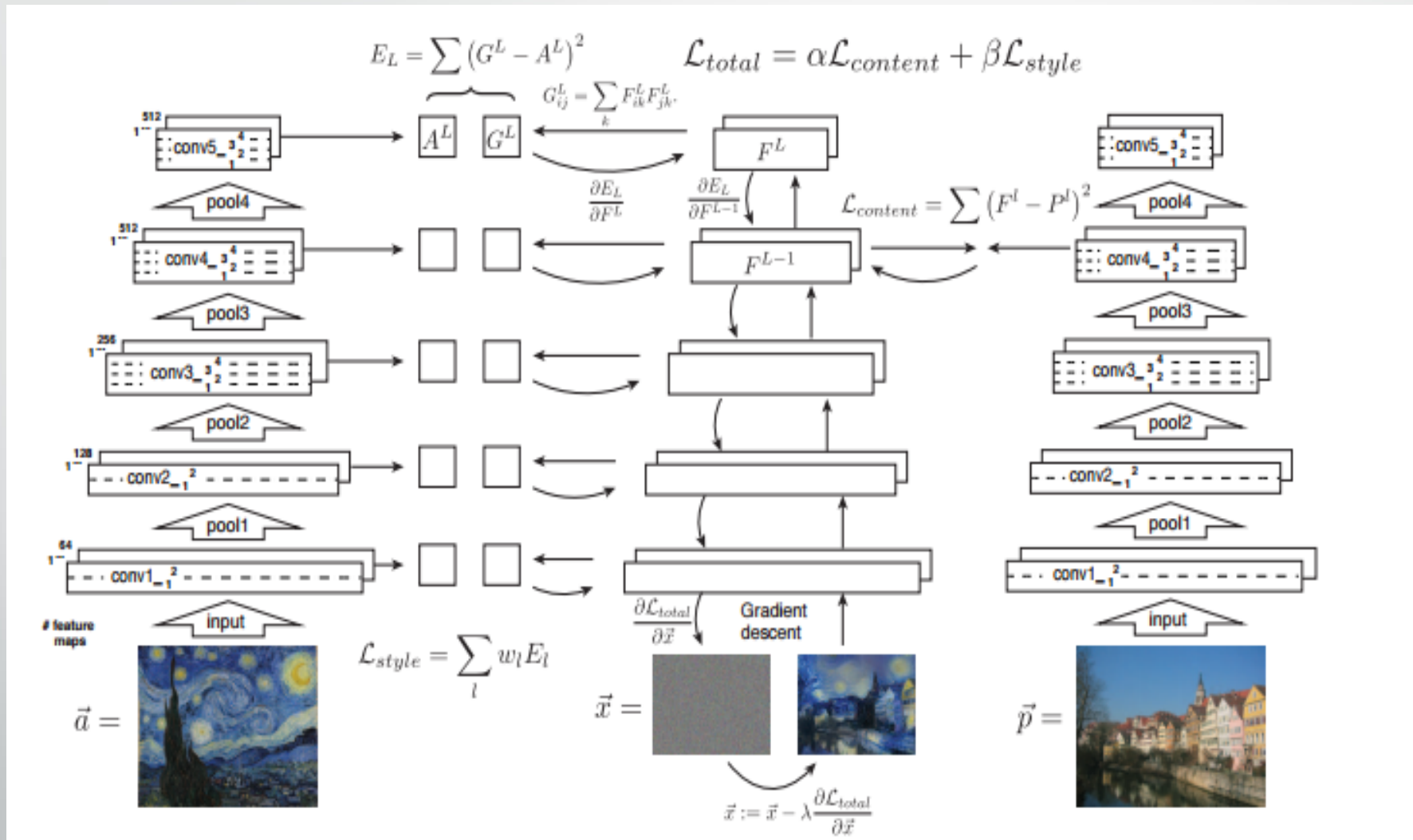
Sujay Yadawadkar,
Virginia Tech

Agenda:

Style transfer:

- Quick overview
- Real time performance
- Experiment Results

Overview:

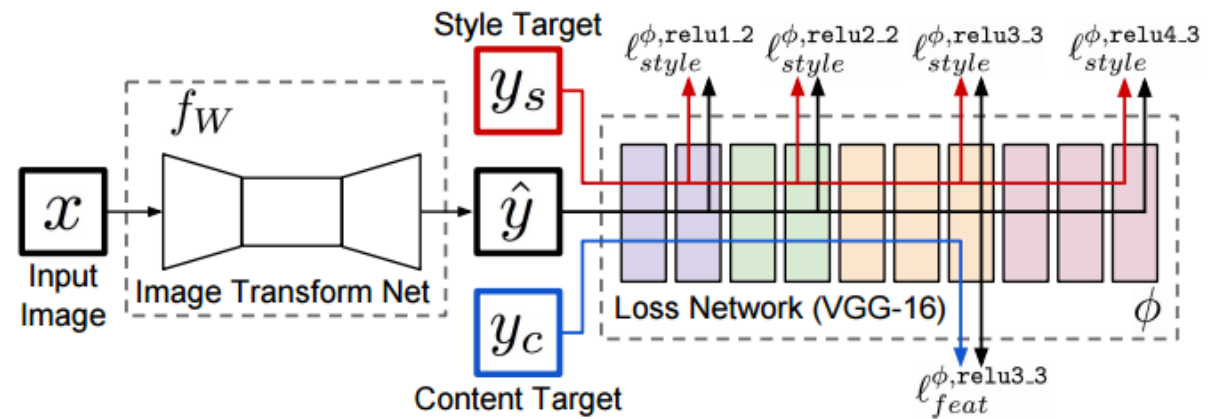


Limitation:

- Gradient descent for every image.
- Can we build a faster style transformation network ..?

Real Time Style Transfer

- **Perceptual Losses for Real-Time Style Transfer and Super-Resolution.** J. Johnson, A. Alahi, L. Fei-Fei, ECCV



Experiment:

Hardware:

- PC with Intel Core-i7 5th Gen.
- 8gb ram
- No GPU used.

Software Dependencies:

- Torch
- Cuda (optional, not used)
- Cudnn (optional, not used)

Procedure:

- Use pretrained torch model.

Results:

Input Image



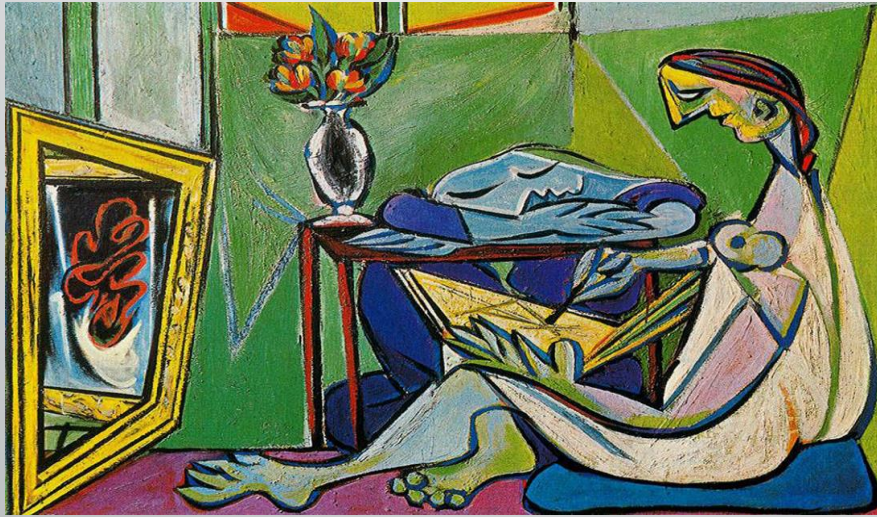
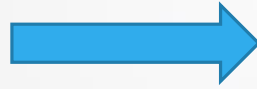
Style Model



Output









Thank you!